







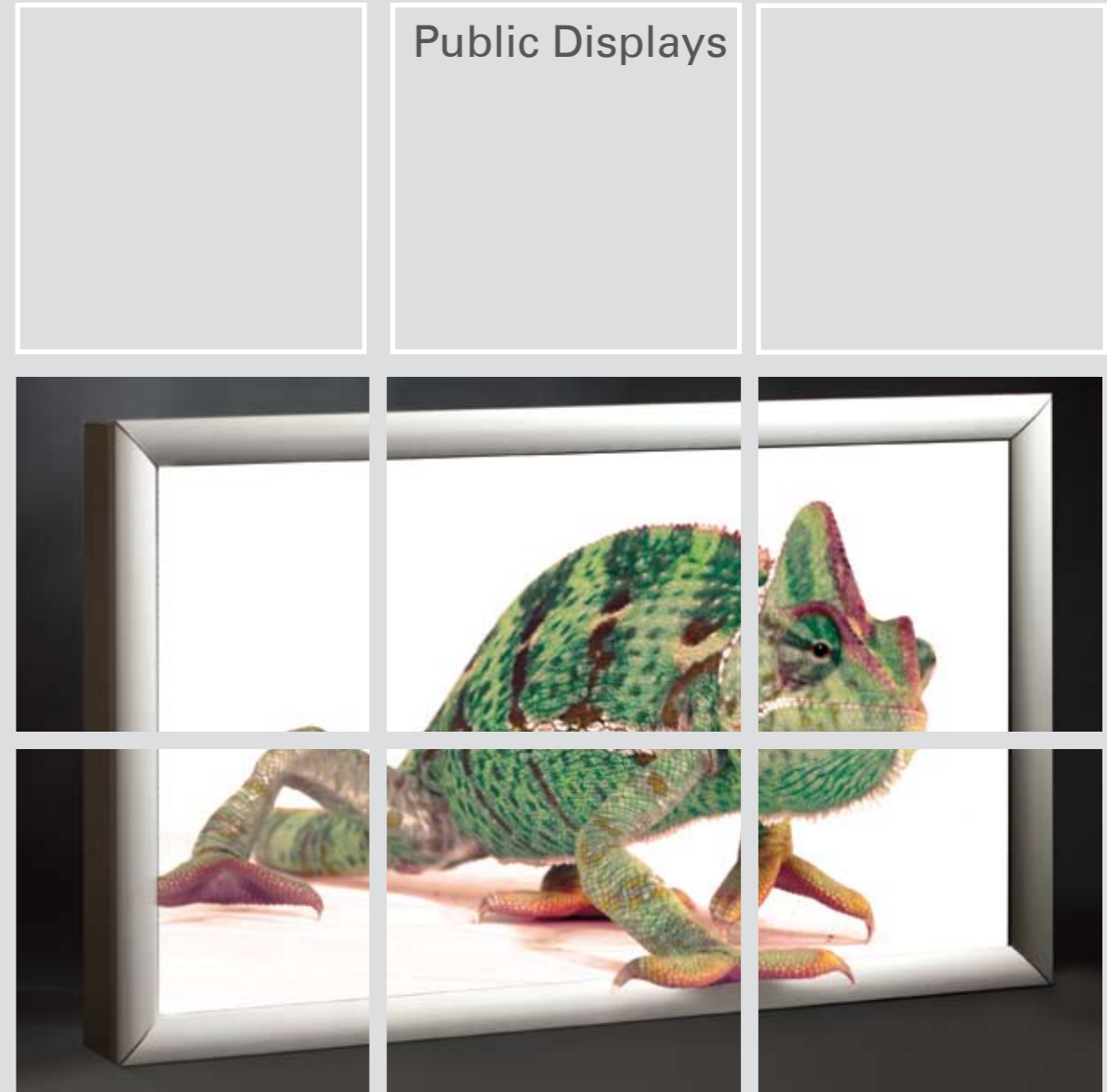
ALBRA Video	32"	40" / 46"	52"
Features 	RGB analog 1366x768 px WXGA VGA, DVI, Video, S-Video	RGB analog 1920x1080 px FHD VGA, DVI, Video, S-Video	RGB analog 1920x1080 px FHD VGA, DVI, Video, S-Video
Options	4-mm-safety glass Mirogard No: 090187 Mirona mirror glass No: 090198 port cover ALBRA No: 020547	4-mm-safety glass Mirogard for 40" No: 090197 for 46" No: 090416 Mirona mirror glass for 40" No: 090199 port cover ALBRA No: 020602	5-mm-safety glass Siflex with passepartout for 52" No: 090406 port cover ALBRA No: 020602
Order number	ALBRA 32 Video No: 090109	ALBRA 40 FHD Video No: 090561 ALBRA 46 FHD Video No: 090593	ALBRA 52 FHD Video No: 090641

ALBRA AT			
Features 	TFT controller with LAN or USB port for multi-displays, 10/100 Mbit Ethernet (only version LAN); USB 2.0 interface		
Options	4-mm- safety glass Mirogard No: 090187 Mirona mirror glass No: 090198 port cover ALBRA No: 020547	4-mm-safety glass Mirogard for 40" No: 090197 for 46" No: 090416 Mirona mirror glass for 40" No: 090199 port cover ALBRA No: 020602	
Order number	ALBRA 32 AT-USB Solution No.: 090723 ALBRA 32 AT-NET Solution No.: 090667	ALBRA 40 FHD AT-USB Solution No.: 090842 ALBRA 40 FHD AT-NET Solution No.: 090840	ALBRA 46 FHD AT-USB Solution No.: 090843 ALBRA 46 FHD AT-NET Solution No.: 090841

ALBRA LAN			
Features  	CPU from Core Duo T2080 1,73 GHz, 1GB RAM, Grafic Intel 945 GM, CF Card Reader; 2 x USB 2.0 port, 1RJ45 LAN port	same like 32", only with Intel 965 GM and CPU from Core2 Duo T8300 2,4 GHz, 2 GB RAM	
Options	4-mm-safety glass Mirogard No: 090187 Mirona mirror glass No: 090198 port cover ALBRA No: 020547	4-mm-safety glass Mirogard for 40" No: 090197 for 46" No: 090416 Mirona mirror glass for 40" No: 090199 port cover ALBRA No: 020602	4/5-mm-safety glass Siflex with passepartout for 52" No: 090406 port cover ALBRA No: 020602
Order number	ALBRA 32 LAN No: 090202	ALBRA 40 FHD LAN No: 090834 ALBRA 46 FHD LAN No: 090837	ALBRA 52 FHD LAN No: 090438

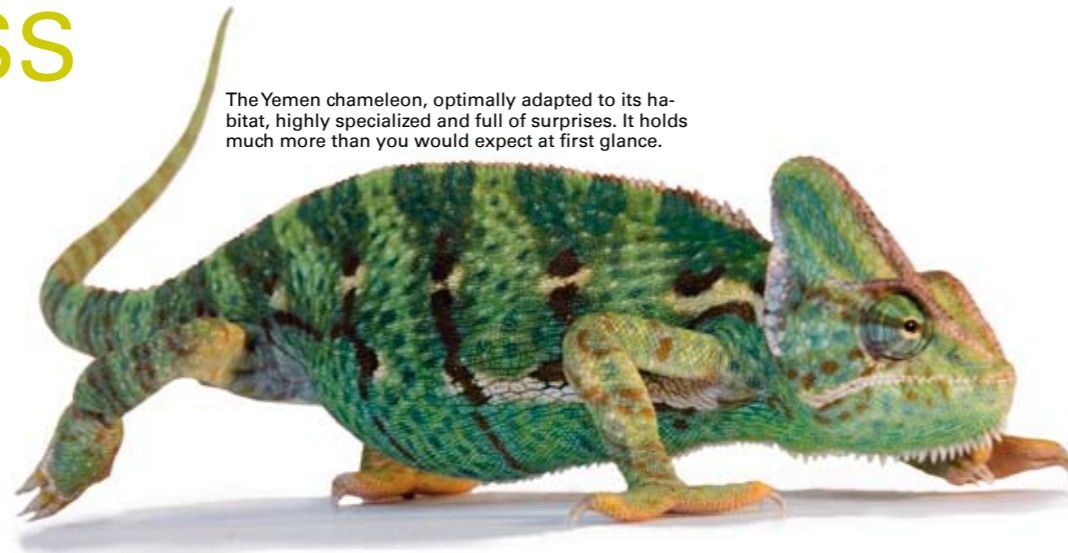
ALBRA IQ			
Features  	CPU from Core Duo T2080 1,73 GHz, 1GB RAM, Grafic Intel 945 GM, HDD 3,5" 80 GB SATA; 2 x USB 2.0 port, 1RJ45 LAN port	same like 32", only with Intel 965 GM and CPU from Core2 Duo T8300 2,4 GHz, 2 GB RAM	
Options	4-mm-safety glass Mirogard No: 090187 Mirona mirror glass No: 090198 port cover ALBRA No: 020547	4-mm-safety glass Mirogard for 40" No: 090197 for 46" No: 090416 Mirona mirror glass for 40" No: 090199 port cover ALBRA No: 020602	4/5-mm-safety glass Siflex with passepartout for 52" No: 090406 port cover ALBRA No: 020602
Order number	ALBRA 32 IQ No: 090566	ALBRA 40 FHD IQ No: 090639 ALBRA 46 FHD IQ No: 090654	ALBRA 52 FHD IQ No: 090569

ALBRA MAX LINE



Public Displays

LARGE DISPLAYS - MAXIMUM SUCCESS



The Yemen chameleon, optimally adapted to its habitat, highly specialized and full of surprises. It holds much more than you would expect at first glance.

MAXLine ALBRA are especially high-quality display systems for large screens starting at 32". As public displays, they feature functions from the classical video monitor to the LAN monitor. This series can be adapted to customer requirements, and can accommodate the customer's corporate design. All MAXLine displays up to 52" have the same dimensions for fastening holders for wall mounts. This ensures extra leeway and flexibility for our customers.

MAXLINE ALBRA

Monitors with ideal display qualities

The DATA DISPLAY SOLUTION MAXLine ALBRA features an impressive appearance with its ultra-flat, robust design and brilliant display quality. Variable display sizes from 32" to 52" allow plenty of room for different design requirements. They are applicable in landscape and portrait mode. Our industrial panels are a guarantee for high quality and a long service life. The Design model features a visually attractive design. The MAXLine ALBRA is suitable for a wide range of customer applications, at a reasonable price. A cover for the ports, available optionally, prevents unauthorized access and significantly reduces the risk of malfunctions. Green IT: Compared with matchable devices we have reduced power consumption of MAXLine by 40 to 50%. In standby mode our displays spend less than 2 Watts energy.

ALBRA VIDEO

Monitor for demanding requirements in all situations

The ALBRA Video fulfills all requirements for a high-end display unit. The controller used for this monitor features numerous convenient functions. Incoming video signals are automatically converted to graphic signals and adapted to the picture. It is possible to display two video sources next to each other.

Constant development, adaptation and specialization are tried-and-tested concepts for success based in nature. Every day brings exciting new projects – the MAXLine series has the right system.

Also, Picture-in-Picture enables the simultaneous display of two video sources in any position. The depicted display is freely adjustable and swivel-mounted. With tiling an option is provided, which spreads an advertisement out to several monitors and it allows split screens in any combinations desired. All available functions are controlled via RS 232 by means of special software.

limited number of ALBRA AT-NET monitors. Various display drivers and software packages for displaying images or for playing slide shows are available as well as a SDK which allows an easy integration of the ALBRA AT-NET monitors into existing applications. The ideal solution for ePoster displays.

ALBRA LAN

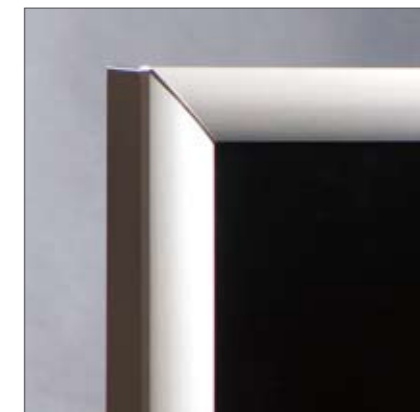
Controllable LAN monitor

The ALBRA LAN is comparable to the classical VGA monitor, but uses the IP Ethernet network instead of a VGA cable for video transmission. This makes it possible for a PC to control a nearly unlimited number of monitors with different content. The PC-based controller is supplied via a CF-port with the desired application and communicates via an Ethernet network. Therefore, the ALBRA LAN can easily be integrated seamlessly in existing IT environments. ALBRA LAN enables the efficient operation of PC-based tools, without the necessity of complete PC installations. It is a passiv cooled system without rotating components.

ALBRA AT

Addressable passiv LAN monitor

The ALBRA AT is a „fit to purpose“ solution for displaying static images. The ALBRA AT-NET is connected to an IP Ethernet network. It is PC-less and without operating system, requires no maintenance or administration and reduces the power consumption of the display controller below 2 Watts. One single server in the network can distribute individual content to an almost un-



The elegant Design model features visually attractive silver aluminum profiles.



port area Albra Video (left) - Ports are located on the side – easily accessible, and easy to protect

port area Albra LAN (right) - port for compact flash card, LAN-ports and USB-port



ALBRA 52" Design

ALBRA IQ

monitor with integrated PC

The ALBRA IQ is a system with a complete high performance PC in it. Furthermore it offers the same functionality like the ALBRA LAN.



silent



landscape/portrait



greent it



power saving