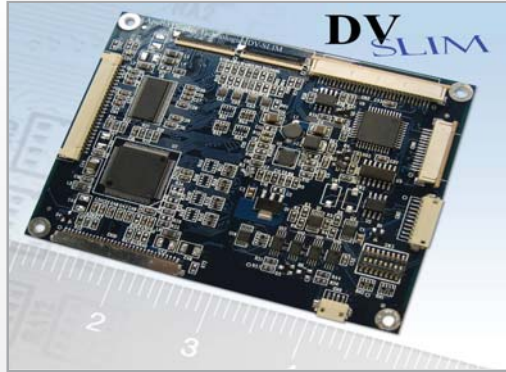




DVI Translator board at an economical price

DV-SLIM Ultra Low Profile DVI

Perfect for basic monitor applications



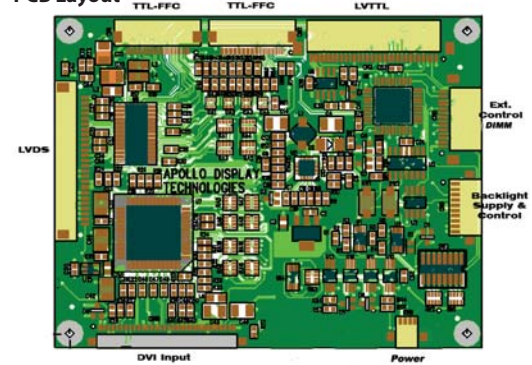
DV-SLIM a new Apollo industrial controller. This space saving DVI converter board is equipped with easy user configurable settings for both the display and backlight inverter used. It is the perfect choice for cost conscious monitor applications where available space is at a minimum. The DV-SLIM allows for a quick connection from the DVI output of your graphics system to most standard TFT displays. The DV-SLIM supports TFT displays with TTL and single channel LVDS interfaces.

- ✓ **Low cost and space saving**
- ✓ **DVI input interfaces**
- ✓ **TTL and LVDS output interfaces**
- ✓ **User configurable display and inverter settings**

Technical Data

Interfaces (input)	DVI
Interfaces (output)	TTL and single channel LVDS 18/24 Bit (non-conventional)
Resolution (min/max)	VGA (640 x 480) up to WXGA (1366 x 768)
Supported Displays	6 or 8-bit Panels
Power Supply	+5V and +12V, (dependant on use of +12V inverter)
User Controls	Brightness, Up/Down
Compatibility	Mechanical dimensions, mounting holes and placement of plugs will be compatible to those of all future models

PCB Layout



- Conversion** DV-SLIM converter boards enable TFT displays to be connected to standard Digital Visual Interfaces. DVI input signals are converted by DV-SLIM into TFT compliant TTL or single channel LVDS signals.
- Color depth** DV-SLIM converter boards support flat panels with 24-bit and 18-bit color depth.
- User control** Two pushbuttons are integrated on the board to set the display brightness. An external pushbutton board is also available.

For our in-house developments we offer:

- ✓ **Longterm availability**
- ✓ **Product stability**
- ✓ **Compatibility of successor products in form, function and integration**
- ✓ **Technical support**

DV-SLIM converter boards are only available in connection with a kitted TFT display.

